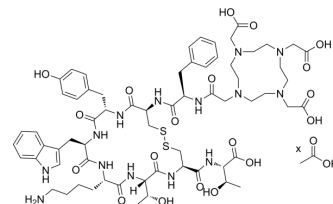


## DOTATATE acetate

<b>Cat. No.:</b>	HY-106244A
<b>CAS No.:</b>	177943-89-4
<b>Molecular Formula:</b>	$C_{65}H_{90}N_{14}O_{19}S_2 \cdot xC_2H_4O_2$
<b>Sequence Shortening:</b>	{D-Phe}-CY-{D-Trp}-KTCT (Disulfide bridge:Cys2-Cys7)
<b>Target:</b>	Others
<b>Pathway:</b>	Others
<b>Storage:</b>	Sealed storage, away from moisture and light, under nitrogen Powder    -80°C    2 years -20°C    1 year  * In solvent : -80°C, 6 months; -20°C, 1 month (sealed storage, away from moisture and light, under nitrogen)



## SOLVENT & SOLUBILITY

<b>In Vitro</b>	H <sub>2</sub> O : 8.33 mg/mL (ultrasonic and warming and heat to 60°C)
<b>In Vivo</b>	1. Add each solvent one by one: PBS Solubility: 11.11 mg/mL (Infinity mM); Clear solution; Need ultrasonic and warming and heat to 60°C

## BIOLOGICAL ACTIVITY

<b>Description</b>	DOTATATE acetate is a DOTA-conjugated peptide. DOTATATE acetate can be labelled with radionuclides for positron emission tomography (PET) imaging and peptide receptor radionuclide research (PRRT) <sup>[1][2][3][4]</sup> .
<b>In Vivo</b>	<sup>177</sup> Lu-DOTATATE shows excellent antitumor effects in rats <sup>[1]</sup> . MCE has not independently confirmed the accuracy of these methods. They are for reference only.

## REFERENCES

- [1]. Jong M, et, al. Combination radionuclide therapy using <sup>177</sup>Lu- and <sup>90</sup>Y-labeled somatostatin analogs. J Nucl Med. 2005 Jan;46 Suppl 1:13S-7S.
- [2]. Gains JE, et, al. <sup>68</sup>Ga-DOTATATE and <sup>123</sup>I-mIBG as imaging biomarkers of disease localisation in metastatic neuroblastoma: implications for molecular radiotherapy. Nucl Med Commun. 2020 Aug 10.
- [3]. Breeman WAP, et, al. Optimising conditions for radiolabelling of DOTA-peptides with <sup>90</sup>Y, <sup>111</sup>In and <sup>177</sup>Lu at high specific activities. Eur J Nucl Med Mol Imaging. 2003 Jun;30(6):917-20.
- [4]. Reubi JC, et, al. Affinity profiles for human somatostatin receptor subtypes SST1-SST5 of somatostatin radiotracers selected for scintigraphic and radiotherapeutic use. Eur J Nucl Med. 2000 Mar;27(3):273-82.

---

**Caution: Product has not been fully validated for medical applications. For research use only.**

Tel: 609-228-6898

Fax: 609-228-5909

E-mail: [tech@MedChemExpress.com](mailto:tech@MedChemExpress.com)

Address: 1 Deer Park Dr, Suite Q, Monmouth Junction, NJ 08852, USA