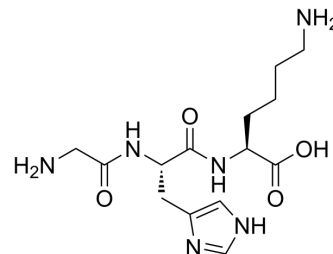


Glycyl-L-histidyl-L-lysine

Cat. No.:	HY-P0046
CAS No.:	49557-75-7
Molecular Formula:	C ₁₄ H ₂₄ N ₆ O ₄
Molecular Weight:	340.38
Target:	Others
Pathway:	Others
Storage:	4°C, protect from light * In solvent : -80°C, 6 months; -20°C, 1 month (protect from light)



BIOLOGICAL ACTIVITY

Description	Glycyl-L-histidyl-L-lysine is a tripeptide consisting of glycine, L-histidine and L-lysine residues joined in sequence. Glycyl-L-histidyl-L-lysine is a hepatotropic immunosuppressor and shows anxiolytic effect. Glycyl-L-histidyl-L-lysine and its copper complexes show good skin tolerance ^{[1][2][3]} .
In Vitro	Glycyl-L-histidyl-L-lysine and its copper complexes and saccharomyces/copper ferment on secretion of pro-inflammatory IL-6 in normal human dermal fibroblasts NHDF cell line ^[1] . Glycyl-L-histidyl-L-lysine and its copper complexes decreases TNF-α-dependent IL-6 secretion in fibroblasts ^[1] . MCE has not independently confirmed the accuracy of these methods. They are for reference only.
In Vivo	Glycyl-L-histidyl-L-lysine (intraperitoneal injection; 1.5, 5, 50, 150, and 450 mg/kg; 10 times) can stimulate mitotic activity of hepatocytes and dose-dependently suppress immune reactivity ^[2] . Glycyl-L-histidyl-L-lysine (intraperitoneal injection; 0.5, 5, and 50 µg/kg) can produce an anxiolytic effect in the elevated plus maze test ^[3] . MCE has not independently confirmed the accuracy of these methods. They are for reference only.

REFERENCES

- [1]. Arkadiusz Gruchlik, et al. Effect of Gly-Gly-His, Gly-His-Lys and their copper complexes on TNF-alpha-dependent IL-6 secretion in normal human dermal fibroblasts. Acta Pol Pharm. 2012 Nov-Dec;69(6):1303-6.
- [2]. M Yu Smakhtin, et al. Tripeptide Gly-His-Lys is a hepatotropic immunosuppressor. Bull Exp Biol Med. 2002 Jun;133(6):586-7.
- [3]. I Bobyntsev, et al. Anxiolytic effects of Gly-His-Lys peptide and its analogs. Bull Exp Biol Med. 2015 Apr;158(6):726-8.

Caution: Product has not been fully validated for medical applications. For research use only.

Tel: 609-228-6898

Fax: 609-228-5909

E-mail: tech@MedChemExpress.com

Address: 1 Deer Park Dr, Suite Q, Monmouth Junction, NJ 08852, USA