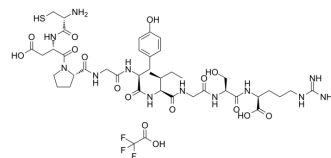


## Laminin (925-933)(TFA)

**Cat. No.:** HY-P0131A  
**Molecular Formula:** C<sub>42</sub>H<sub>63</sub>F<sub>3</sub>N<sub>12</sub>O<sub>16</sub>S  
**Molecular Weight:** 1081.08  
**Sequence:** Cys-Asp-Pro-Gly-Tyr-Ile-Gly-Ser-Arg  
**Sequence Shortening:** CDPGYIGSR  
**Target:** Others  
**Pathway:** Others  
**Storage:** Sealed storage, away from moisture  
 Powder -80°C 2 years  
 -20°C 1 year



\* In solvent : -80°C, 6 months; -20°C, 1 month (sealed storage, away from moisture)

### SOLVENT & SOLUBILITY

In Vitro	H <sub>2</sub> O : 50 mg/mL (46.25 mM; Need ultrasonic)					
	Preparing Stock Solutions	<div><div>Solvent</div><div>Concentration</div></div>	Mass	1 mg	5 mg	10 mg
			1 mM	0.9250 mL	4.6250 mL	9.2500 mL
			5 mM	0.1850 mL	0.9250 mL	1.8500 mL
			10 mM	0.0925 mL	0.4625 mL	0.9250 mL
Please refer to the solubility information to select the appropriate solvent.						
In Vivo	1. Add each solvent one by one: PBS Solubility: 50 mg/mL (46.25 mM); Clear solution; Need ultrasonic					

### BIOLOGICAL ACTIVITY

Description	Laminin (925-933) (TFA) is a peptide derived from residues 925-933 of the Laminin B1 chain that binds to the laminin receptor <sup>[1]</sup> .
-------------	--

### REFERENCES

[1]. Nelson J, et al. Murine epidermal growth factor (EGF) fragment (33-42) inhibits both EGF- and laminin-dependent endothelial cell motility and angiogenesis. Cancer Res. 1995 Sep 1;55(17):3772-6.

---

**Caution: Product has not been fully validated for medical applications. For research use only.**

Tel: 609-228-6898

Fax: 609-228-5909

E-mail: [tech@MedChemExpress.com](mailto:tech@MedChemExpress.com)

Address: 1 Deer Park Dr, Suite Q, Monmouth Junction, NJ 08852, USA