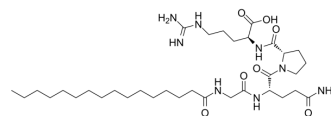


## Palmitoyl Tetrapeptide-3

**Cat. No.:** HY-P0064  
**CAS No.:** 221227-05-0  
**Molecular Formula:** C<sub>34</sub>H<sub>62</sub>N<sub>8</sub>O<sub>7</sub>  
**Molecular Weight:** 694.91  
**Sequence:** Palm-Gly-Gln-Pro-Arg  
**Sequence Shortening:** Palm-GQPR  
**Target:** Others  
**Pathway:** Others  
**Storage:** Sealed storage, away from moisture and light

Powder -80°C 2 years  
 -20°C 1 year

\* In solvent : -80°C, 6 months; -20°C, 1 month (sealed storage, away from moisture and light)



### SOLVENT & SOLUBILITY

#### In Vitro

DMF : 10 mg/mL (14.39 mM; ultrasonic and adjust pH to 3 with HCl)

	Solvent Concentration	Mass		
		1 mg	5 mg	10 mg
Preparing Stock Solutions	1 mM	1.4390 mL	7.1952 mL	14.3904 mL
	5 mM	0.2878 mL	1.4390 mL	2.8781 mL
	10 mM	0.1439 mL	0.7195 mL	1.4390 mL

Please refer to the solubility information to select the appropriate solvent.

### BIOLOGICAL ACTIVITY

#### Description

Palmitoyl Tetrapeptide-3 is a synthetic peptide, corresponding to 341-344 amino acid sequence of IgG human H-chain, with phagocytosis stimulating activity<sup>[1]</sup>.

### REFERENCES

[1]. Rocchi R, et al. Synthesis and biological activity of tuftsin and rigin derivatives containing monosaccharides or monosaccharide derivatives. Int J Pept Protein Res. 1987 Feb;29(2):262-75.

---

**Caution: Product has not been fully validated for medical applications. For research use only.**

Tel: 609-228-6898

Fax: 609-228-5909

E-mail: [tech@MedChemExpress.com](mailto:tech@MedChemExpress.com)

Address: 1 Deer Park Dr, Suite Q, Monmouth Junction, NJ 08852, USA